

Wing Hinge Tester

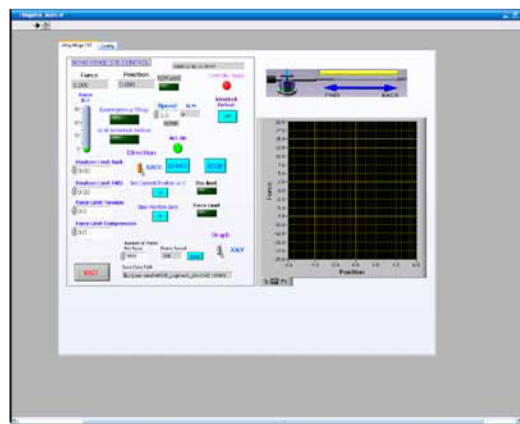
The Hinge Characterization STE mounts to an alignment stand and translates a Wing Attachment Clamp using a linear actuator. A Position transducer measures the position of the clamp and a Load Transducer measures the force required to move the clamp. The STE includes a computer system that controls the linear actuator and records position and force data as ordered pairs. A calibration fixture is included that allows the position and force transducers to be calibrated.

Features:

- Excitation: 10 Vdc, 15 Vdc max
- Output: 2 mV/V $\pm 0.25\%$
- 5-Point Calibration (in Tension): 0%, 50%, 100%, 50%, 0%
- Linearity: $\pm 0.15\%$ FSO
- Hysteresis: $\pm 0.1\%$ FSO
- Repeatability: $\pm 0.05\%$ FSO
- Max Force 97 lbs (limited to +25 lb, - 25 lb by controller)
- Max Speed 5.0 inch/sec (limited to 24 inch / minute by motor controller/software)
- Max Travel 7.2 inch (limited to 6 inches by controller)
- Backlash 0.002 inch
- Step Resolution 1600 steps/inch



Wing Hinge Assembly



Wing Hinge User Interface



Leader in Creative Technology

3525 Quakerbridge Rd
Suite 906
Hamilton, NJ 08619

www.skylinktechnology.com